

# Supply Chain Manager Position Overview

Supply chain managers are crucial to the global economy and their organizations. They represent a unique discipline responsible for supporting a global network that produces and delivers products from raw materials to end customers, which ultimately impacts a company's bottom line. Working among many departments, supply chain managers engage in the design, planning, execution, control and supervision of supply chain activities with the objectives of creating value, building a competitive infrastructure, leveraging worldwide logistics, synchronizing supply with demand and measuring performance globally.

## What does a supply chain manager do?

- Sales and operations planning, including forecasting
- Material requirements planning
- Production planning
- Manage customer issues
- Align supply chain activities including planning, sourcing, production, and delivery with demand
- Manage issues in supply and availability of material
- Measure operational and financial performance
- Identify and mitigate risks

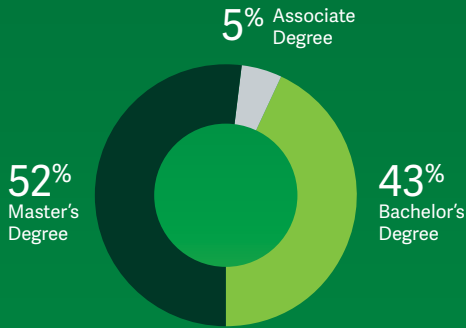
## Technical Skills:

- Business systems such as ERP and MRP
- Operational and financial metrics
- Inventory management
- Master scheduling
- Supplier capabilities
- Logistics and distribution
- Analytics reports

## Leadership Skills:

- Strong written and verbal communication
- Collaboration
- Ability to work with multiple stakeholders
- Critical thinking
- Team management

Education



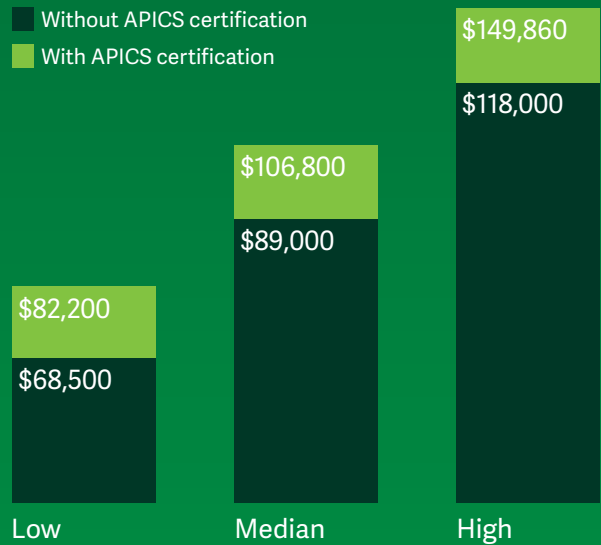
**Top 3 Bachelor's Degrees:**

1. Engineering
2. Business Administration
3. Supply Chain Management

**Top 3 Master's Degrees:**

1. Business Administration
2. Supply Chain Management
3. Engineering

Salary Ranges for a Supply Chain Manager

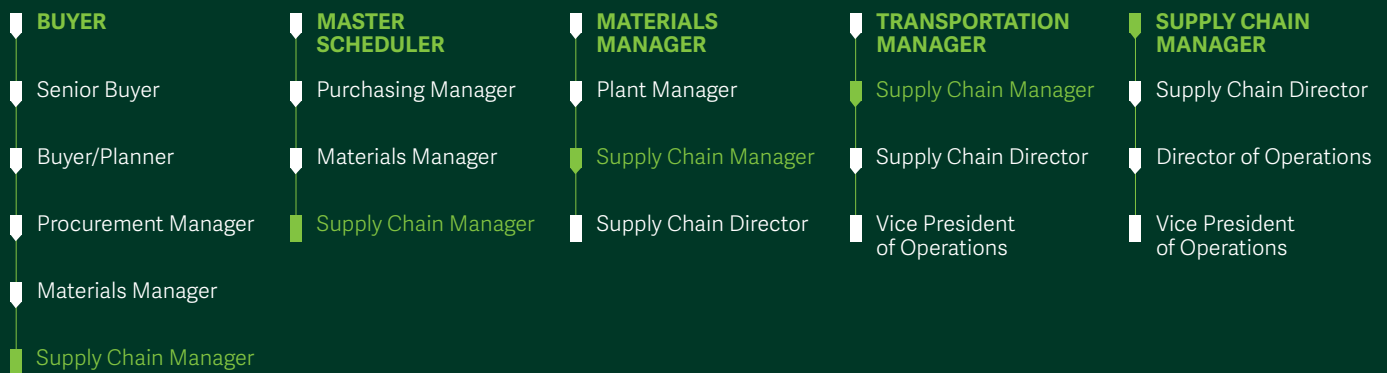


**Earn 27% more** with an APICS certification!\*

To learn more, please visit

[ascm.org/learning-development/certifications-credentials](https://www.ascm.org/learning-development/certifications-credentials)

Supply Chain Manager Career Paths



\*Based on 2021 ASCM Salary and Career Report